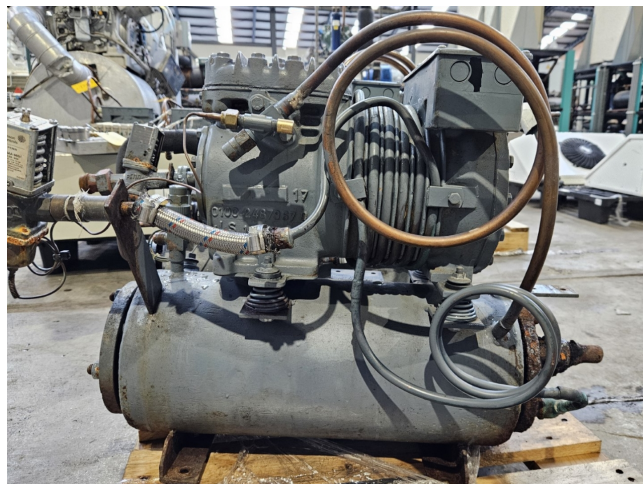


## DWM DKSJB-100-EWL/000

### Specifications

Brand	DWM
Type	DKSJB-100-EWL/000
Refrigerant	Freon
kW at -5°C/+40°C	3,9
kW at -10°C/+40°C	3,2
kW at -20°C/+40°C	2,0
kW at -30°C/+40°C	1,1
kW at -40°C/+40°C	0,5
kW at -45°C/+40°C	0,3
Pressure safety switches	✓
Hp/Lp/Op	
Pressure gauges	✓
Hp/Lp/Op	
Sight Glass	✓
m <sup>3</sup> / h	6,33
Condensing Unit	✓
Sizes	700x350x500 mm (LxWxH)
Stock	1



### Description

#### Used DWM DKSJB-100-EWL/000

Used DWM / Copeland water cooled condensing unit on Freon. Complete with a DWM DKSJB-100-EWL/000 semi-hermetic reciprocating compressor, DWM shell and tube condenser, pressure and safety switches/gauges. The compressor has a displacement of 6,33 m<sup>3</sup>/h.

\*Why choose for HOSBV? Were not only the largest used refrigeration specialist in Europe, but also, we deliver all equipment including an extensive test, warranty and industrial cleaning.

\*Optional we can also perform a new paint job and arrange the logistics.



